

ITEM No.	RECD	DESCRIPTION	MATERIAL	DWG No.
1		OCT. SECT. SHAFT 7" A/F TO 5 1/2" A/F EXTERIOR CM.	11 GA. A570 GR.50	
2		BASE PLATE 12" SQUARE	1" PL. G40.21 44W	
3		ACCESS PANEL 4 3/4" x 24" (38 CIRCUIT) C/W COVER ASSY	ST-184 & ST-111	
4		KNOCK OUT PLUG 1 1/2" DIA.	STEEL PLATED CP PVC	
5		TOP PLATE 5 1/4" A/F OCTAGON	1/2" PL. G40.21 44W	
6		1 1/4" I.D. RUBBER GROMMET	SP-26NAUR No. 315-049	

FINISH:
HOT DIP GALVANIZE TO CSA STANDARD C164-M92 TO NET MINIMUM RETENTION OF 500 g/m². ALL AREAS OF DAMAGED GALVANIZING SHALL BE REPAIRED WITH SELF FLUXING LOW TEMPERATURE ZINC BASED ALLOY. ROD USE OF SPRAY ON COATINGS IS NOT ACCEPTABLE.

NOTES:
1. **WELDING**
ALL WELDING SHALL CONFORM TO CSA STANDARD W59. FABRICATOR SHALL BE FULLY APPROVED BY THE CANADIAN WELDING BUREAU AS PER CSA STANDARD W47.1. LONGITUDINAL SEAM WELD SHALL HAVE 60% MINIMUM PENETRATION EXCEPT 6" FROM LOWER END AND 4" FROM UPPER END SHALL BE COMPLETE PENETRATION. THE START AND END OF COMPLETE PENETRATION LONGITUDINAL SEAM WELD SECTIONS SHALL BE SMOOTH AND FREE OF NOTCHES OR OTHER WELD DEFECTS. ACCESS OPENING RING TO SHAFT WELD SHALL HAVE AN EFFECTIVE THROAT EQUAL OR GREATER THAN THICKNESS OF SHAFT.

2. XX IS THE POLE MANUFACTURER'S CODE, YR IS THE LAST TWO DIGITS OF YEAR OF MANUFACTURE AND ### IS THE POLE NUMBER STARTING WITH 001 AND PROCEEDING CONSECUTIVELY FOR EACH ADDITIONAL POLE DURING THE MANUFACTURE YEAR



3. **TOLERANCES**
ALL ACROSS FLAITS (A/F) ARE EXTERIOR DIMENSIONS. THE TOP OF SHAFT SHALL BE 5/8" ±0, -1/8" A/F AND BOTTOM OF SHAFT SHALL BE 7" +0, -1/8" A/F.



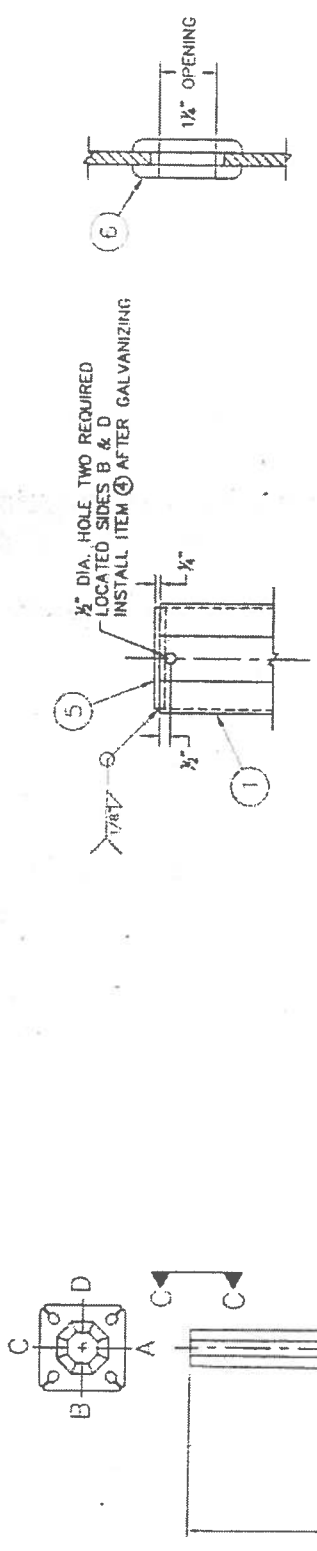
MAXIMUM UNFACTORED BASELOADS
 MX 7395 lb.ft.
 MY 1496 lb.ft.
 TORSION 92 lb.ft.
 SHEAR X 140 lb.
 SHEAR Y 697 lb.
 DEAD LOAD 345 lb.

REV No.	DATE	REVISIONS	APPROVED
2	MAY 26, 2004	REDRAWN, ADDED SHEET 2	<i>D. Selme</i>

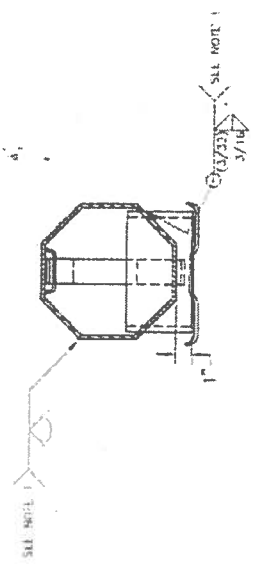
THE CITY OF WINNIPEG
PUBLIC WORKS DEPARTMENT
TRANSPORTATION DIVISION
GES ENGINEERING INC.
 CALGARY AB. PHONE (403) 240-2921 FAX (403) 240-3713

TRAFFIC SIGNAL LIGHT DUTY STRAIGHT
 SHAFT POLE OF 18 FEET IN HEIGHT

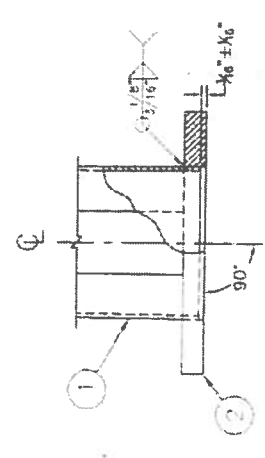
DESIGNED AND APPROVED <i>D. Selme</i>	DRAWN G.G.	DWG No. ST-166
DATE Aug 17, 2004	DATE MAY 12, 2004	SCALE N.T.S.
		SHEET 1 OF 2
		REV No. 2



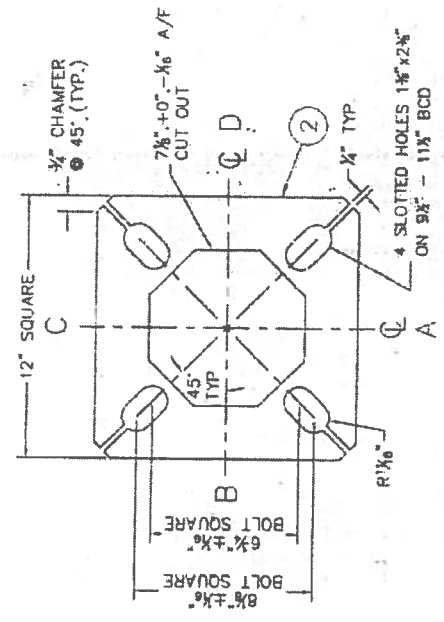
SECTION C-C



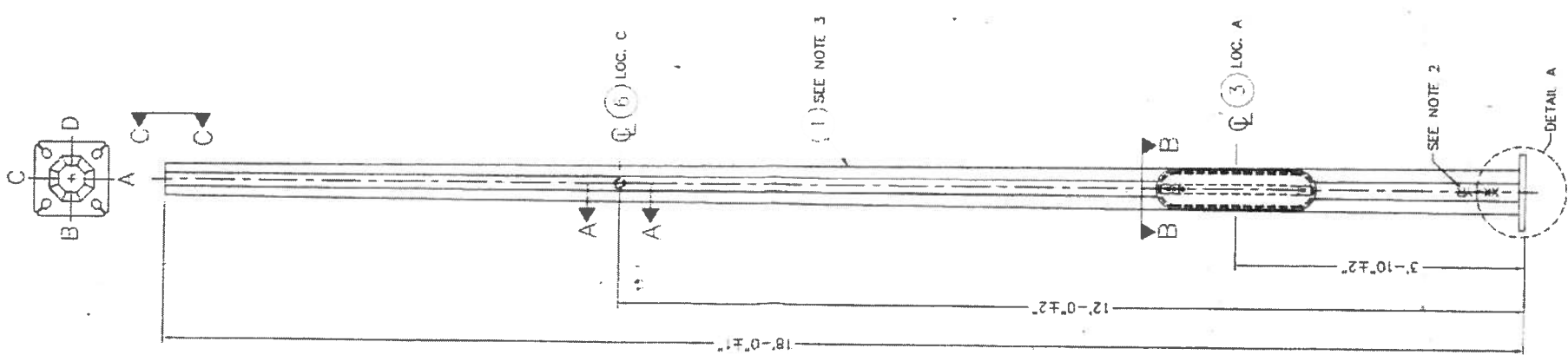
SECTION B-B



DETAIL "A"



BASE PLATE DETAIL



(1) SEE NOTE 3

SEE NOTE 2

DETAIL A